



Jefferson High School EXECUTIVE SUMMARY

PROVIDED BY FINDORFF

700 W. Milwaukee Street • Jefferson, WI 06.28.2024

What's New at Jefferson High School?

The Jefferson High School project continues to make great headway into the summer months! Findorff masonry crews continue around the exterior façade of the Skills Lab Addition installing brick veneer and cast stone. Roofing installation crews are working to detail the new roof at the Skills Lab Addition to prepare for trim and coping. Findorff and MEP (Mechanical, Electrical, Plumbing) crews are working to complete underground work and final slab pour-backs in the Tech Ed Shop areas; MEP crews are also working their way through the Tech Ed Shop and Classroom areas roughing in new systems. Findorff carpentry crews are back installing the last few stud walls, including a large bulkhead for a new sliding door at the Fab Lab/Metals Classroom. Exciting things to come at the High School!

Progress Update

- Masonry veneer is ongoing at the Skills Lab Addition
- Roof detail work is ongoing at the Skills Lab Addition
- Interior wall and soffit framing at the Tech Ed Classrooms/Corridors
- Thickened slab and trench drain reinforcement at the Tech Ed Shops and Skills Lab Addition
- MEP overhead rough-ins and system tie-in at the Tech Ed Shops/Classrooms and Skills Lab Addition

Upcoming Work

- Block fill and painting at the Tech Ed Shops/Classrooms
- Drywall finishing at the Tech Ed Shops/Classrooms
- Aluminum framing/glazing at the Skills Lab Addition
- Main slab-on-grade pour at the Skills Lab Addition



The new animal waste storage tank being hoisted into place outside of the Agriculture Shop to serve for future animal studies.



Findorff ironworker and labor crews preparing the reinforcement and vapor barrier for plumbing crews to set the new Automotive Shop trench drains.

DID YOU KNOW?

Plumbing crews on-site recently installed an animal waste holding tank outside of the Agriculture Shop at the High School. This tank comes equipped with a rigid concrete structure, a high-level alarm system, and 1,000 gallons of holding capacity; this unit weighed 13,500 lbs during the empty setting process! The animal waste holding tank will provide a neat asset for future animal projects!



Questions?

Project Manager, Jonathan Winch / (608) 219-5091 / jwinch@findorff.com

Project Engineer, Brennan Sullivan / (920) 319-2077 / bsullivan@findorff.com

Findorff
BUILDING & BEYOND



East Elementary EXECUTIVE SUMMARY

PROVIDED BY FINDORFF

//////////////////// 120 S. Sanborn Ave • Jefferson, WI ////////////////////// PAGE 2

In with the new at East Elementary!

Demolition is nearly complete over at East Elementary. With a clean slate in the main office area, wall framing has begun, and Mechanical, Electrical, and Plumbing (MEP) equipment is being roughed-in. "Roughing-In" describes the placement of equipment in the approximate spot it is needed, final detailing and positioning occurs when the fixtures themselves are placed.

Without MEP systems, a building is just a shell. This equipment is the lifeblood that maintains a comfortable, functional, and safe interior environment for occupants. So, while it gets little attention from the untrained eye, it's arguably one of the most important aspects of a construction project!

Recently

- Interior demolition nearing completion
- Wall framing/Continued MEP Rough-ins
- Poured Concrete Stoop Slab

Coming Up Next

- Continued Roof Demolition, and installation of new roofing is set to begin!
- Continued Wall Framing/MEP Rough-Ins
- Drywall Installation



The north side roof has been completely demo'ed.



Toilet chases have been installed in what was once the Principal's Office...



Ceiling framing in the music room.

Questions?

Project Manager, Jonathan Winch / (608) 219-5091 / jwinch@findorff.com

Project Engineer, Maura Cannon / (714) 747-4844 / mcannon@findorff.com

Findorff
BUILDING & BEYOND



West Elementary EXECUTIVE SUMMARY

PROVIDED BY FINDORFF

//////////////////////////////////// 900 W. Milwaukee Street • Jefferson, WI ////////////////////////////////////// PAGE 3

Over at West Elementary...

A lot has changed at West Elementary since students left for summer at the end of May. Crews have been busy wrapping up demolition while new crews have arrived and begun framing walls and installing MEP equipment.

A lot can change in just a matter of weeks... we'll be checking back in soon!

Recently

- Slab Removal and Trenching for Plumbing
- Interior Wall Framing
- Electrical Panel Replacements

Looking Ahead

- Trenching Pour-Backs
- Continued Interior Framing
- Continued MEPF Rough-Ins



Under-slab plumbing work in one of the new restrooms.



New electric panels in place.



A former classroom is broken-out into smaller spaces to better suit needs of the school.

Questions?

Project Manager, Jonathan Winch / (608) 219-5091 / jwinch@findorff.com

Project Engineer, Maura Cannon / (714) 747-4844 / mcannon@findorff.com

Findorff
BUILDING & BEYOND



Sullivan Elementary EXECUTIVE SUMMARY

PROVIDED BY FINDORFF

206 S. Taft Ave • Jefferson, WI PAGE 4



The new door in the main vestibule will allow for a secure entrance into the main office. A block masonry wall surrounds.

Meanwhile, in Sullivan...

Things are progressing well! This week, trenches were infilled with concrete where under-slab plumbing was installed. After the new flooring is in place, you'll never be able to tell we were here..

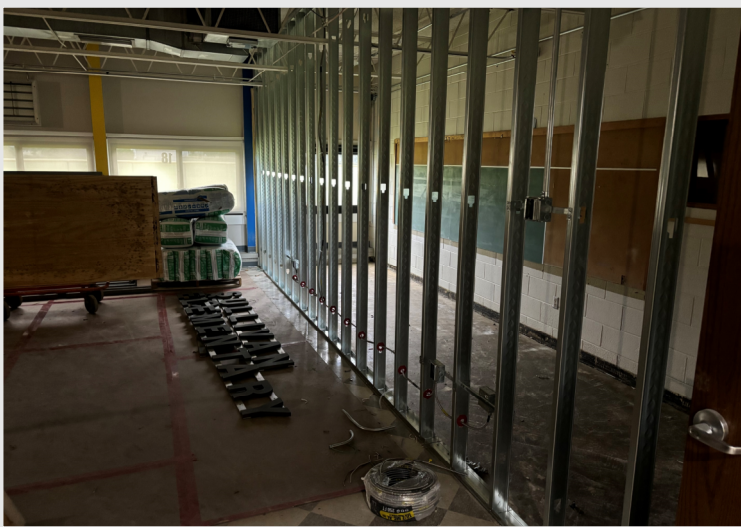
Cuts were made in the exterior of the building for the new windows that will be installed soon, and the new walls are on their way up! This project has both masonry and metal stud walls, which means we have two separate teams of experts on site for the install.

Recently

- Under-Slab Plumbing Rough-Ins
- Slab Pour-Back
- Openings Cut for New Exterior Windows

Coming Up Next

- Continued Interior Wall Framing
- Continued Masonry Wall Installation



A new metal stud wall is framed out.



This image was caught part of the way through the slab pour-back.. It's amazing how much different that lumpy mix will change in just a few hours.

Questions?

Project Manager, Jonathan Winch / (608) 219-5091 / jwinch@findorff.com

Findorff
BUILDING & BEYOND